

*Stainless Steel Mains Pressure Unvented Cylinder*

# MAINS BOOSTING

*Up to 5.0 Bar  
Operating Pressure  
At Point Of Use*

**25 YEAR  
WARRANTY**

- No anode
- Internal air bubble
- Standard cartridge 2.1 Bar fitted
- Upgradeable to 5.0 Bar
- 3Kw immersion heaters fitted
- Removable dip tube – increases capacity by 20%
- Dedicated secondary return facility
- CFC-free insulation
- 1" connections available for higher flow rates (90 lpm) with 210, 250 & 330 litres
- Indirect cylinders supplied with two port motorised valve
- Twin Coil Option available for use in connection with solar and under-floor heating

## **Approvals**

BBA Approved  
WRAS Listed  
British Gas Council Listed  
NEMKO Approval for Immersion  
Heaters & Thermostats

Superpro



## **Unreliable or poor mains pressure?**

Use the professional Superpro or Smartpro quiet running pumps to boost the water from a break tank into the sealed system or a combination boiler to give a constant high pressure from 3.0 Bar to 5.0 Bar.

Smartpro





# MAINS BOOSTING

## Unvented Cylinder Selection Chart

Code	Twin Coil Option	Standard Capacity Litres	No. Bed-room	No. Bath-rooms	Max. Outlet Pressure	Connection (inches)	Height (mm)	Diameter (mm)	3kw Elements Fitted	Approx. Weight Full (Kg)	Approx Heat Time (mins)
<b>INDIRECT</b>											
FC1000	No	100	Bedsit		2.1	3/4"	720	580	1	150	22
FC1010	No	125	1	1	2.1	3/4"	900	580	1	187	28
FC1020	No	170	2	1	2.1	3/4"	1150	580	1	243	23
FC1030	Yes	210	3-4	1	2.1	3/4"	1400	580	1	303	25
FC1040	Yes	250	3-4	2	2.1	3/4"	1600	580	1	349	28
FC1050	Yes	330	4-6	3	2.1	3/4"	2090	580	1	462	39
FC1030F1	Yes	250	3-4	1	5.0	1"	1400	580	1	360	28
FC1040F1	Yes	300	3-4	2	5.0	1"	1600	580	1	418	34
FC1050F1	Yes	380	4-6	3	5.0	1"	2090	580	1	555	47

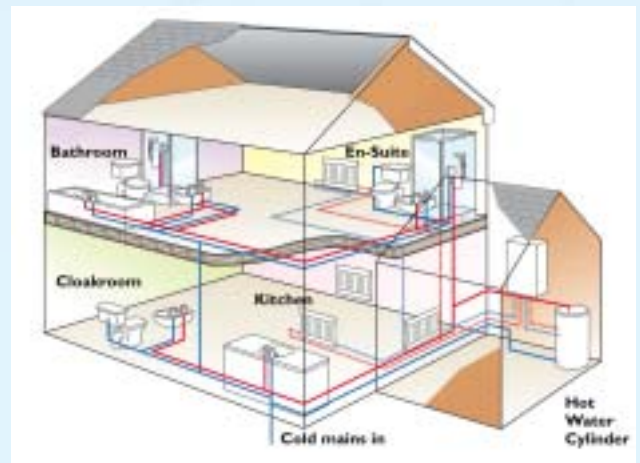
### DIRECT

FC2000	No	100	Bedsit		2.1	3/4"	720	580	1	150	81
FC2010	No	125	1	1	2.1	3/4"	900	580	2	187	102
FC2020	No	170	2	1	2.1	3/4"	1150	580	2	243	148
FC2030	No	210	3-4	1	2.1	3/4"	1400	580	2	303	175
FC2040	No	250	3-4	2	2.1	3/4"	1600	580	2	349	202
FC2050	No	330	4-6	3	2.1	3/4"	2090	580	2	462	263
FC2030F1	No	250	3-4	1	5.0	1"	1400	580	2	360	202
FC2040F1	No	300	3-4	2	5.0	1"	1600	580	2	418	245
FC2050F1	No	380	4-6	3	5.0	1"	2090	580	2	555	325

**5.0 Bar Upgrade** - Pressure Cartridge (FC3000) required to increase 3/4" connection cylinders operating pressure to 5.0 bar.

**Expansion Vessel** - required for all 5.0 bar systems, 18 litre (FC3050) up to 170 Lt Cylinder & 60 litre (FC3100) for 210 - 380 litre.

**Wall Fixing** - Cylinders up to and including 210 litres can be supplied with wall fixing brackets.



Technical Helpline: 01793 820142  
[www.pumpworld.co.uk](http://www.pumpworld.co.uk)